

The rechargeable batteries are lead-lead dioxide systems. The dilute sulfuric acid electrolyte is absorbed by separators and thus immobilized. Should the battery be accidentally overcharged producing hydrogen and oxygen, Special one-way valves allow the gases to escape thus avoiding excessive pressure build-up. Otherwise, the battery is completely sealed and is, therefore, maintenance-free, leak proof and usable in any position.



Battery Construction

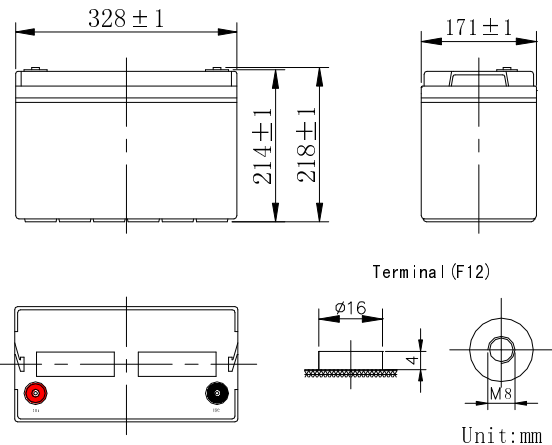
Component	Positive plate	Negative plate	Container	Cover	Safety valve	Terminal	Separator	Electrolyte
Raw material	Lead dioxide	Lead	ABS	ABS	Rubber	Copper	Fiberglass	Sulfuric acid

General Feature

- Absorbent Glass Mat(AGM) technology for efficient gas recombination of up to 99% and freedom from electrolyte maintenance or water adding.
- Not restricted for air transport-complies with IATA/ICAO Special Provision A67.
- UL-recognized component.
- Can be mounted in any orientation.
- Computer designed lead, calcium tin alloy grid for high power density.
- Long service life, float or cyclic applications.
- Maintenance-free operation.
- Low self discharge.

Characteristics

Nominal voltage	12V
Length(mm/inch)	328/12.9
Width(mm/inch)	171/6.74
Height(mm/inch)	214/8.43
Total Height(mm/inch)	220/8.66
Approx. Weight(kg/lbs)	31/68.3



Specifications Performance

Ampere Hour Capacity	20HR(5.5A to 10.8V)		10HR(10.5A to 10.8V)		5HR(19.2A to 10.5V)	
	110		105		96	
Minutes of Discharge	25A to 10.2V	56A to 9.6V	75A to 9.6V	85A to 9.6V	100A to 9.6V	
	225	86	61	52	40	
Cranking Amps	32° F/0°C: 650			0° F/-18°C: 500		
Internal resistance	Fully Charged battery 77° F(25°C) : 3.9mΩ					
Operating temperature Range	Discharge		Charge		Storage	
	-20~60°C		-10~50°C		-20~60°C	
Self – Discharge	3% of capacity declined per month at 20°C					
Max. Discharge Current 77° F(25°C)	800A (5S)					
Short circuit current	3100A					
Charge (Constant Voltage)	Float: 13.6~13.8 V/77° F/(25°C)					
	Cycle: 14.4~14.7 V/77°F/(25°C)			Max. Current: 26.3A		

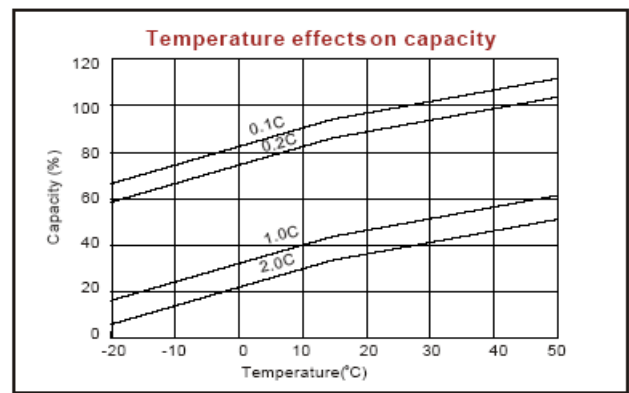
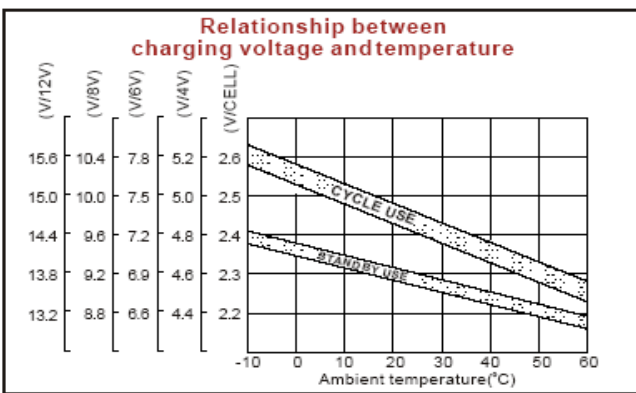
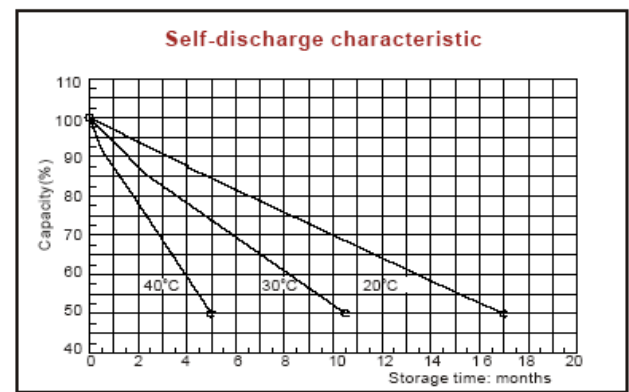
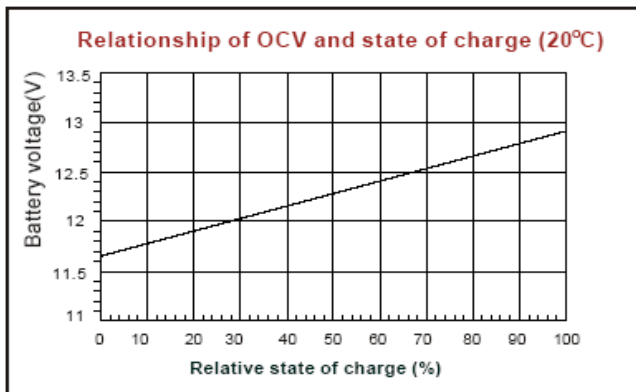
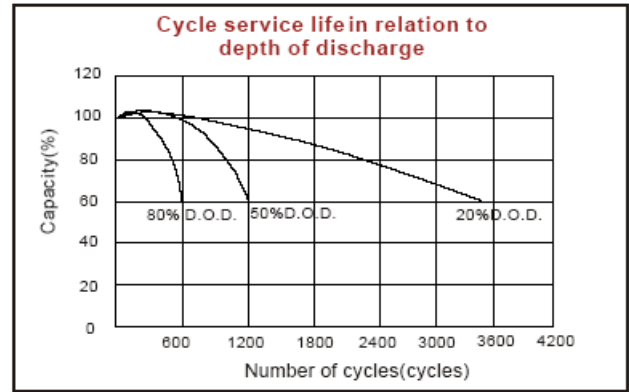
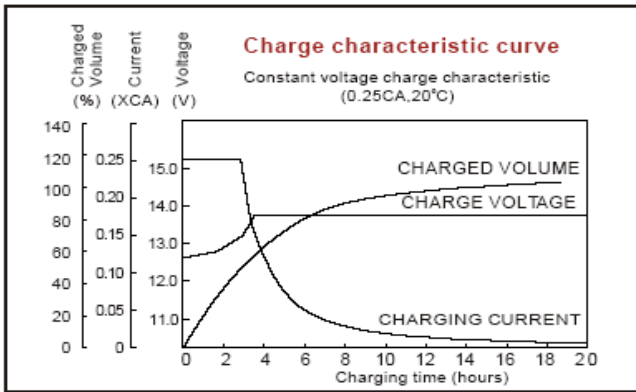
Discharge Constant Current (Amperes at 77°F 25°C)

End Point Volts/Cell	5min	10min	15min	30min	45min	1h	3h	5h	10h
1.60V	360	240	183	115	85.5	70.0	31.5	20.6	10.9
1.65V	340	228	175	110	83.0	68.5	30.8	20.2	10.9
1.70V	318	215	166	105	80.2	66.7	30.0	19.7	10.8
1.75V	294	201	157	99.5	77.2	64.7	29.2	19.2	10.7
1.80V	267	186	147	93.5	74.0	62.5	28.2	18.6	10.5

Discharge Constant Power (watts at 77°F 25°C)

End Point Volts/Cell	5min	10min	15min	30min	45min	1h	2h	3h	5h
1.60V	640	420	320	200	152	125	78.7	59.0	38.8
1.65V	610	403	308	194	148	122	76.7	57.8	38.1
1.70V	578	385	295	187	144	119	74.5	56.5	37.3
1.75V	544	366	282	180	139	115	72.3	55.2	36.5
1.80V	507	346	268	172	133	111	70.0	53.8	35.6

(Note)The above characteristics data are average values obtained Within three charge/discharge cycles not the minimum values.



DONGGUAN OREMA POWER CO., LTD

Add: #1 Qilinling Road Shahu, Tangxia Town, Dongguan Guangdong China

TEL: +86-769- 3896 1163 +86-769- 3896 1168

FAX: +86-769- 3896 1169



www.oremabattery.com