



# UNL700-2 (2V700Ah/10hr)

The rechargeable batteries are lead-lead dioxide systems. The dilute sulfuric acid electrolyte is absorbed by separators and thus immobilized.

Should the battery be accidentally overcharged producing hydrogen and oxygen, Special one-way valves allow the gases to escape thus avoiding excessive pressure build-up. Otherwise, the battery is completely sealed and is, therefore, maintenance-free, leak proof and usable in any position.

## Battery Construction

|              |                |                |           |       |              |          |            |               |
|--------------|----------------|----------------|-----------|-------|--------------|----------|------------|---------------|
| Component    | Positive plate | Negative plate | Container | Cover | Safety valve | Terminal | Separator  | Electrolyte   |
| Raw material | Lead dioxide   | Lead           | ABS       | ABS   | Rubber       | Copper   | Fiberglass | Sulfuric acid |

## General Feature

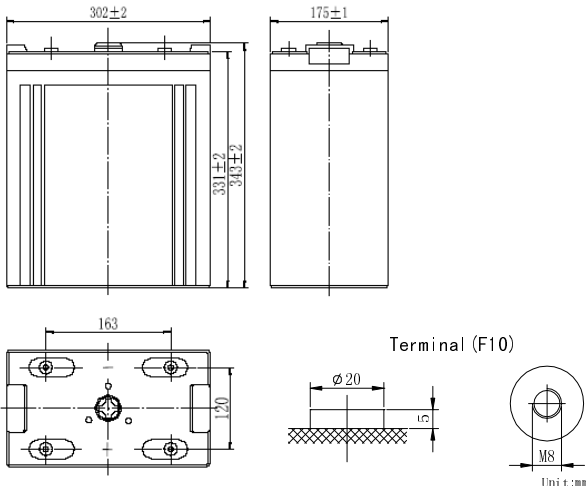
- Absorbent Glass Mat(AGM) technology for efficient gas recombination of up to 99% and freedom from electrolyte maintenance or water adding.
- Not restricted for air transport-complies with IATA/ICAO Special Provision A67.
- UL-recognized component.
- Can be mounted in any orientation.
- Computer designed lead, calcium tin alloy grid for high power density.
- Long service life, float or cyclic applications.
- Maintenance-free operation.
- Low self discharge.

## Performance Characteristics

|   |  |       |
|---|--|-------|
| Capacity<br>77°F(25°C)                          | 10 hour rate (70A、1.80V)                           | 700Ah |
|   | 5 hour rate (125A、1.75V)                           | 625Ah |
|   | 3 hour rate (185A、1.70V)                           | 555Ah |
|   | 1 hour rate (450A、1.60V)                           | 450Ah |
| Internal Resistance                             | Full charged Battery77°F(25°C): 0.6mΩ              |       |
| Capacity affected by Temperature (20 hour rate) | 104° F(40°C)                                       | 102%  |
|   | 77° F(25°C)  | 100%  |
|   | 32° F(10°C)  | 85%   |
|   | 5° F(-15°C)  | 65%   |
| Self-Discharge<br>68°F(20°C)                    | Capacity after 3 month storage                     | 90%   |
|   | Capacity after 6 month storage                     | 80%   |
|   | Capacity after 12month storage                     | 60%   |
| Max. discharge current77°F(25°C): 2000A(5S)     |  |       |
| Charge (Constant Voltage)                       | Float: 2.25~2.30 V/77° F(25°C)                     |       |
|   | Cycle:2.35~2.45 V/77°F(25°C)<br>Max. Current: 140A |       |

## SPECIFICATION

- Nominal voltage ..... 2V
- Number of cell ..... 1
- Length(mm/inch) ..... 302/11.9
- Width(mm/inch) ..... 175/6.89
- Height(mm/inch) ..... 330/13.0
- Total Height(mm/inch) ..... 367/14.45
- Approx. Weight(kg/lbs) ..... 40/88.2



Total height with removable cover:367

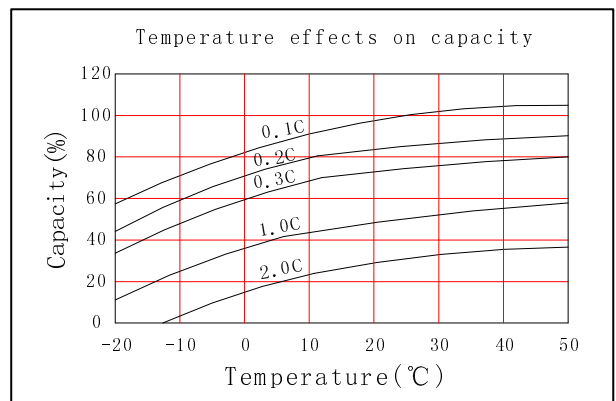
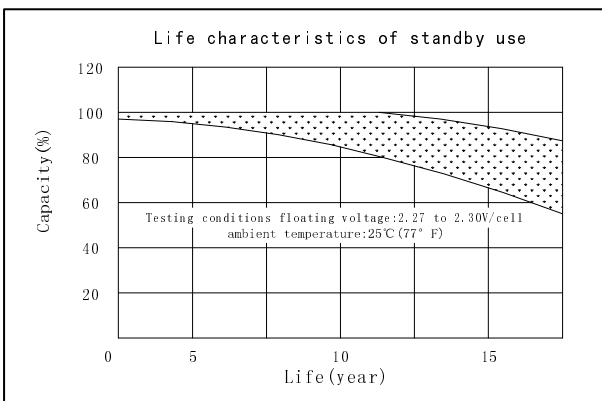
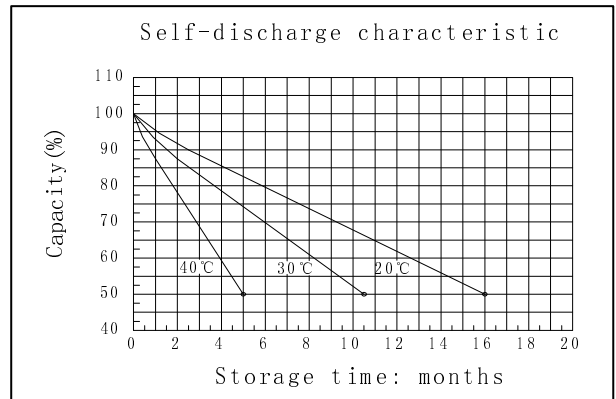
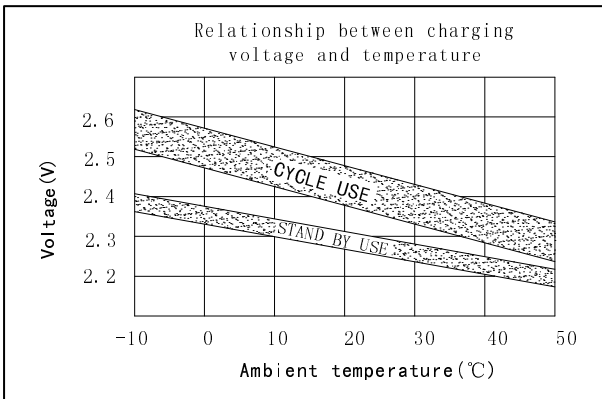
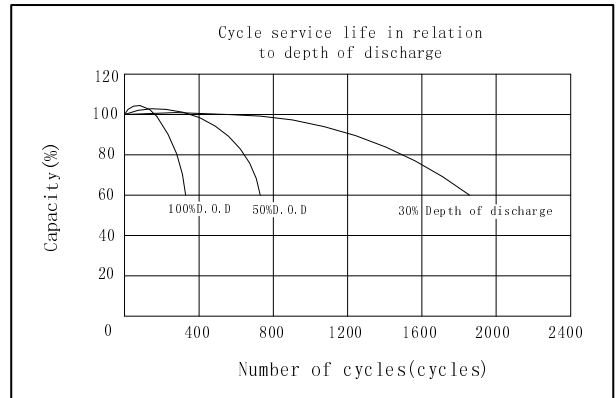
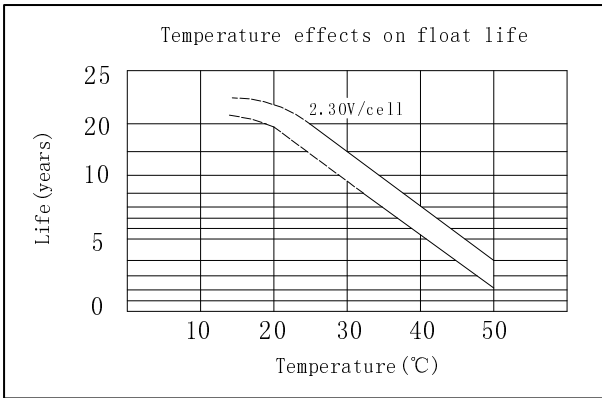
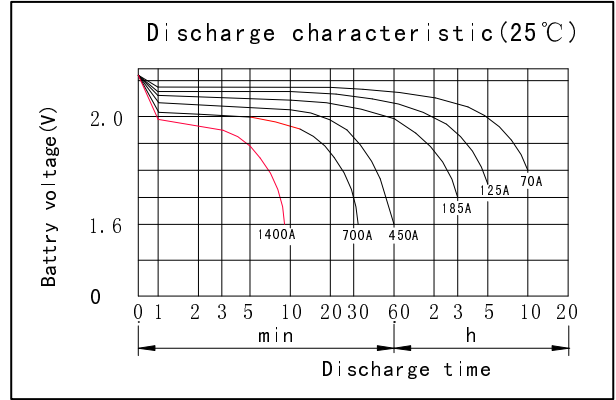
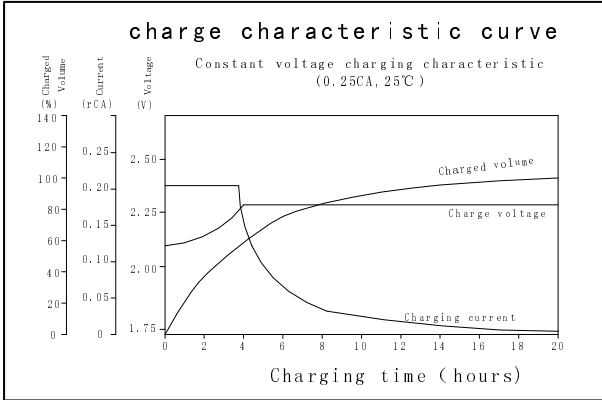
### Discharge Constant Current (Amperes at 77° F 25 °C)

| End Point Volts/Cell | 5min | 10min | 15min | 30min | 45min | 1h  | 3h  | 5h  | 10h |
|----------------------|------|-------|-------|-------|-------|-----|-----|-----|-----|
| 1. 60V               |      | 1340  | 1030  | 740   | 555   | 450 | 195 | 131 | 73  |
| 1. 65V               |      | 1275  | 985   | 710   | 535   | 435 | 190 | 129 | 72  |
| 1. 70V               |      | 1210  | 945   | 680   | 515   | 420 | 185 | 127 | 71  |
| 1. 75V               |      | 1145  | 900   | 650   | 495   | 405 | 180 | 125 | 70  |
| 1. 80V               |      | 1075  | 855   | 610   | 472   | 388 | 174 | 122 | 68  |

### Discharge Constant Power (watts at 77° F 25 °C)

| End Point Volts/Cell | 5min | 10min | 15min | 30min | 45min | 1h  | 2h  | 3h  | 5h  |
|----------------------|------|-------|-------|-------|-------|-----|-----|-----|-----|
| 1. 60V               |      | 2345  | 1850  | 1340  | 1020  | 835 | 560 | 384 | 252 |
| 1. 65V               |      | 2235  | 1780  | 1280  | 975   | 800 | 547 | 375 | 248 |
| 1. 70V               |      | 2125  | 1710  | 1220  | 930   | 765 | 534 | 365 | 244 |
| 1. 75V               |      | 2015  | 1640  | 1160  | 885   | 730 | 517 | 355 | 240 |
| 1. 80V               |      | 1905  | 1560  | 1090  | 835   | 692 | 485 | 343 | 235 |

(Note)The above characteristics data are average values obtained Within three charge/discharge cycles not the minimum values.



**DONGGUAN OREMA POWER CO., LTD**  
 Add: Daping Industrial Area, Tangxia Town, 523722 Dongguan China  
 TEL: +86-769- 8201 6663    +86-769- 8786 5131  
 FAX: +86-769- 87865135

MH29838  
 C41120412-8891-E-18  
[www.oremabattery.com](http://www.oremabattery.com)