



UNLG Series is GEL battery which is manufactured with AGM separator and colloidal Silicon. Gel battery are featured with low self-discharge, strong ability to recover from deep discharging, excellent cycle life and performance at cold ambient temperatures than conventional VRLA

## Battery Construction

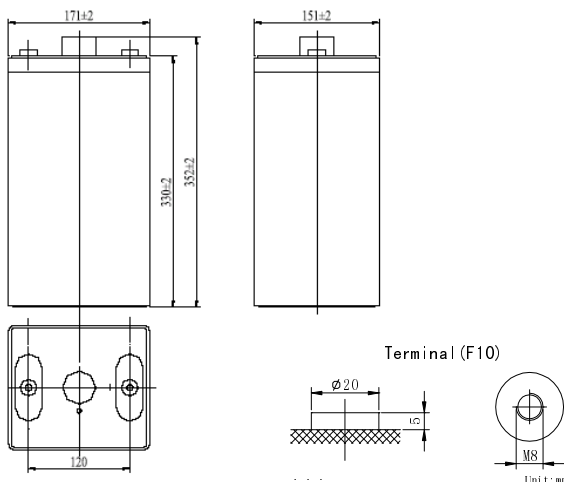
Component	Positive plate	Negative plate	Container	Cover	Safety valve	Terminal	Separator	Electrolyte
Raw material	Lead dioxide	Lead	ABS	ABS	Rubber	Copper	Fiberglass	Colloidal silicon

## General Feature

- Micro millimeter SiO<sub>2</sub> and H<sub>2</sub>SO<sub>4</sub> technology for Efficient gas recombination of up to 99% and Freedom from electrolyte maintenance or water adding.
- Not restricted for air transport-complies with IATA/ICAO Special Provision A67.
- UL-recognized component.
- Can be mounted in any orientation.
- Computer designed lead, calcium tin alloy grid for high power density.
- Long service life, float or cyclic applications.
- Maintenance-free operation.
- Low self discharge.

## SPECIFICATION

Nominal voltage ..... 2V  
 Number of cell ..... 1  
 Length(mm/inch) ..... 171/6.73  
 Width(mm/inch) ..... 151/5.94  
 Height(mm/inch) ..... 330/13.0  
 Total Height(mm/inch) ..... 364/14.3  
 Approx. Weight (kg/lbs) ..... 20.5/45.2



Total height with removable cover: 364

## Performance Characteristics

Capacity 77°F(25°C)	100 hour rate (3.6A、1.85V)	360Ah
	20 hour rate (15.5A、1.8V)	310Ah
	10 hour rate (300A、1.8V)	300Ah
	1 hour rate (180A、1.6V)	180Ah
Internal Resistance	Full charged Battery 77°F(25°C): 0.9mΩ	
Operating Temperature Range	Discharge: -20~60°C	
	Charge: -10~60°C	
	Storage: -20~60°C	
Self-Discharge 3% of capacity declined per month at 20°C(average)		
Max. discharge current 77°F(25°C): 1500A(5S)		
Charge (Constant Voltage)	Float: 2.23~2.28 V/77° F(25°C)	
	Cycle: 2.38~2.42 V/77°F(25°C) Max. Current: 60A	

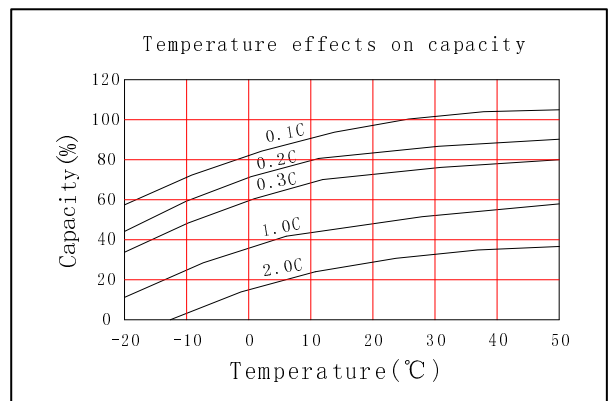
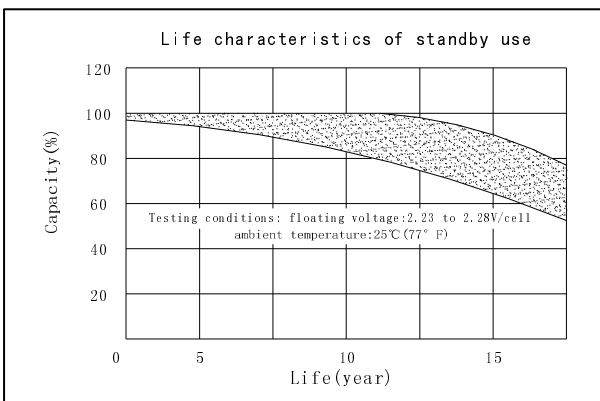
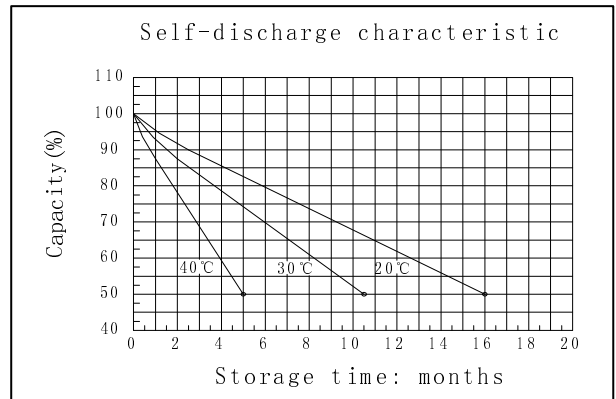
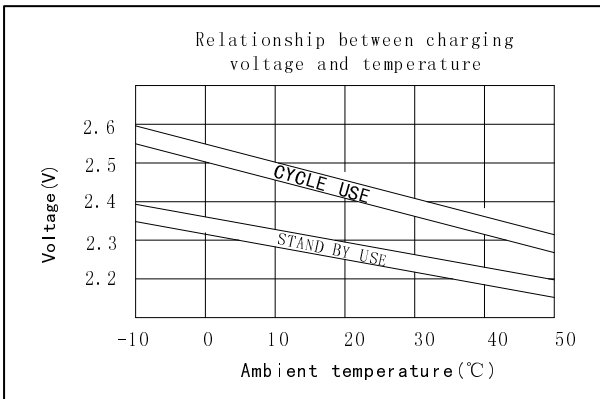
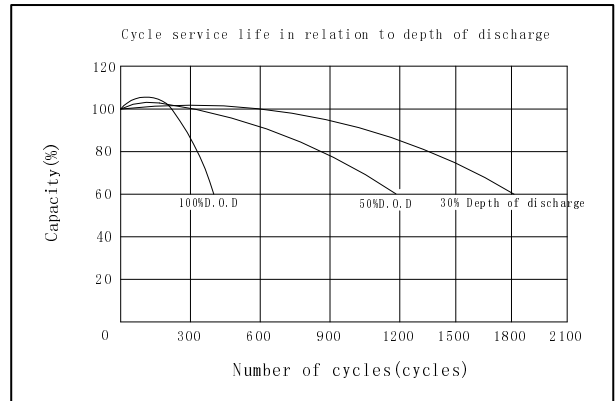
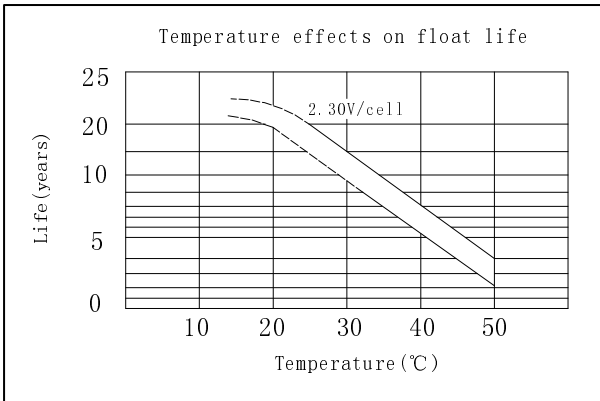
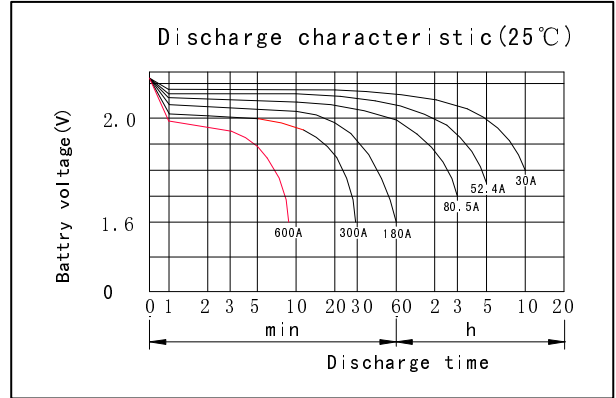
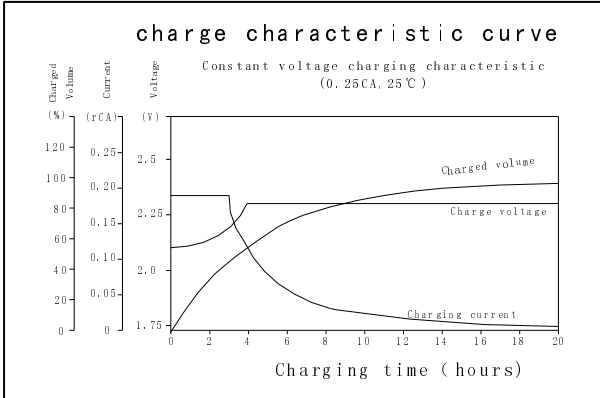
### Discharge Constant Current (Amperes at 77°F 25°C)

End Point Volts/Cell	5min	10min	15min	30min	45min	1h	3h	5h	10h
1.60V		468	420	285	228	180	86.3	56.5	30.8
1.65V		443	401	276	219	175	83.9	55.4	30.7
1.70V		418	380	267	209	169	80.5	53.9	30.5
1.75V		392	359	258	200	162	77.6	52.4	30.3
1.80V		366	337	247	189	155	73.7	50.4	30.0

### Discharge Constant Power (watts at 77°F 25°C)

End Point Volts/Cell	5min	10min	15min	30min	45min	1h	2h	3h	5h
1.60V		843	755	578	476	366	237	170	113
1.65V		793	718	552	460	352	231	166	111
1.70V		744	682	526	443	339	225	161	109
1.75V		695	645	500	427	325	219	157	106
1.80V		646	608	475	410	312	212	152	103

(Note) The above characteristics data are average values obtained within three charge/discharge cycles not the minimum values.



**DONGGUAN OREMA POWER CO., LTD**

Add: #1 Qilinling Road Shahu, Tangxia Town, Dongguan Guangdong China

TEL: +86-769- 3896 1163 +86-769- 3896 1168

FAX: +86-769- 3896 1169



[www.oremabattery.com](http://www.oremabattery.com)